

Metro

Cool and contemporary, this home design can be maximized with state-of-the-art features such as a canopy hood in the ultra-modern kitchen and an amazing atrium in the living area.

3 bedrooms | 2 bathrooms | 1184 sq. ft. | 74' x 16'



A Member of The Shaw Group Limited

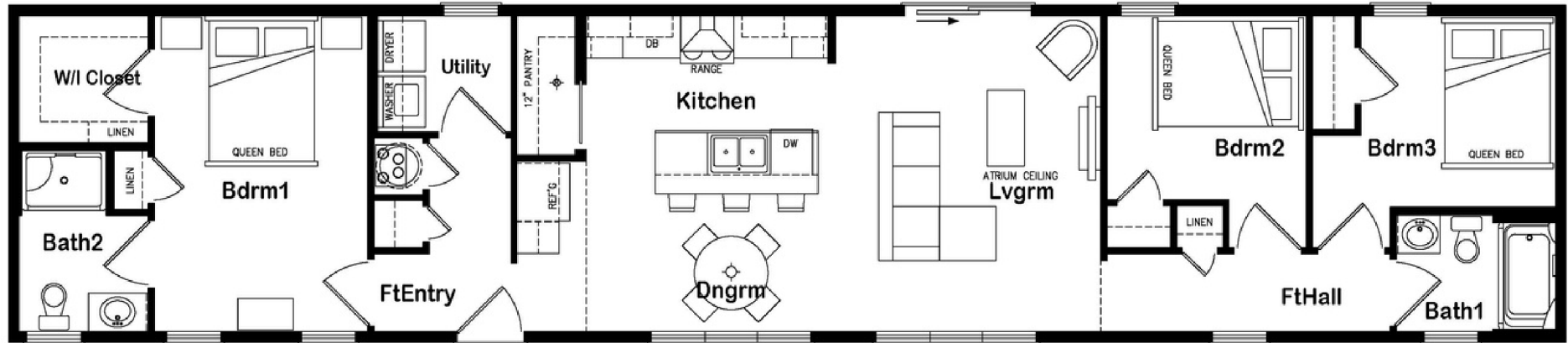
The Shaw Group is one of Eastern Canada's leading manufacturers and community developers.



Metro

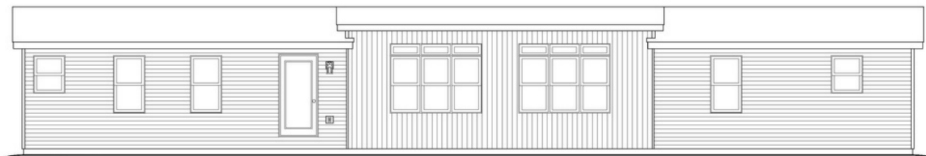
FLOOR PLAN

3 bedrooms | 2 bathrooms | 1184 sq. ft. | 74' x 16'



Features include:

- Spacious living room and dining room, each with triple window
- Large walk-in pantry with pocket door
- Kitchen island with sink and flat bartop
- Front entry into laundry/utility room
- Primary bedroom has walk-in closet
- Ensuite bathroom with walk-in shower
- Front hall features linen closet
- Optional atrium façade and cathedral ceilings



All pricing of our homes must come from the Prestige Homes Authorized Retailer covering your new home site location.

A site inspection by the Retailer may be required prior to final pricing.

Details are subject to change without notice.

14 Industrial Drive, Sussex, NB, E2E 2R8
1-888-433-9130 | info@prestigehomes.ca
prestigehomes.ca

